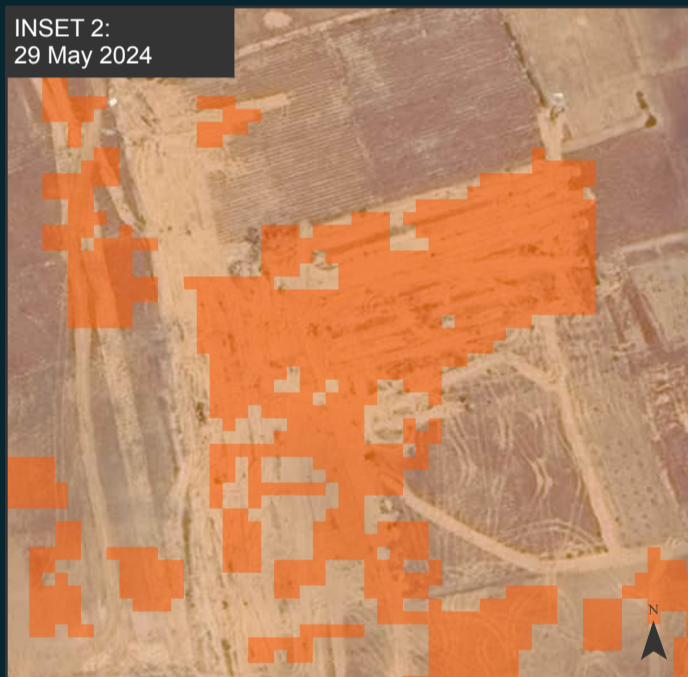
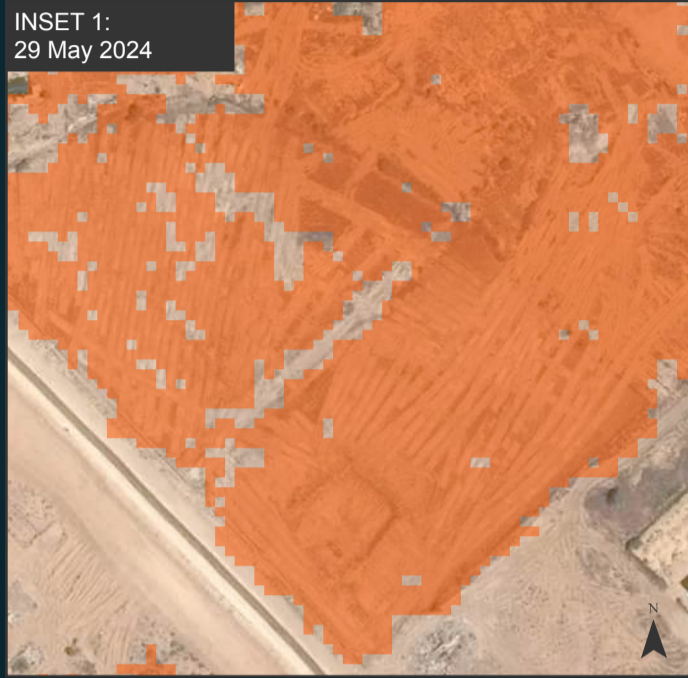


OCCUPIED PALESTINIAN TERRITORY

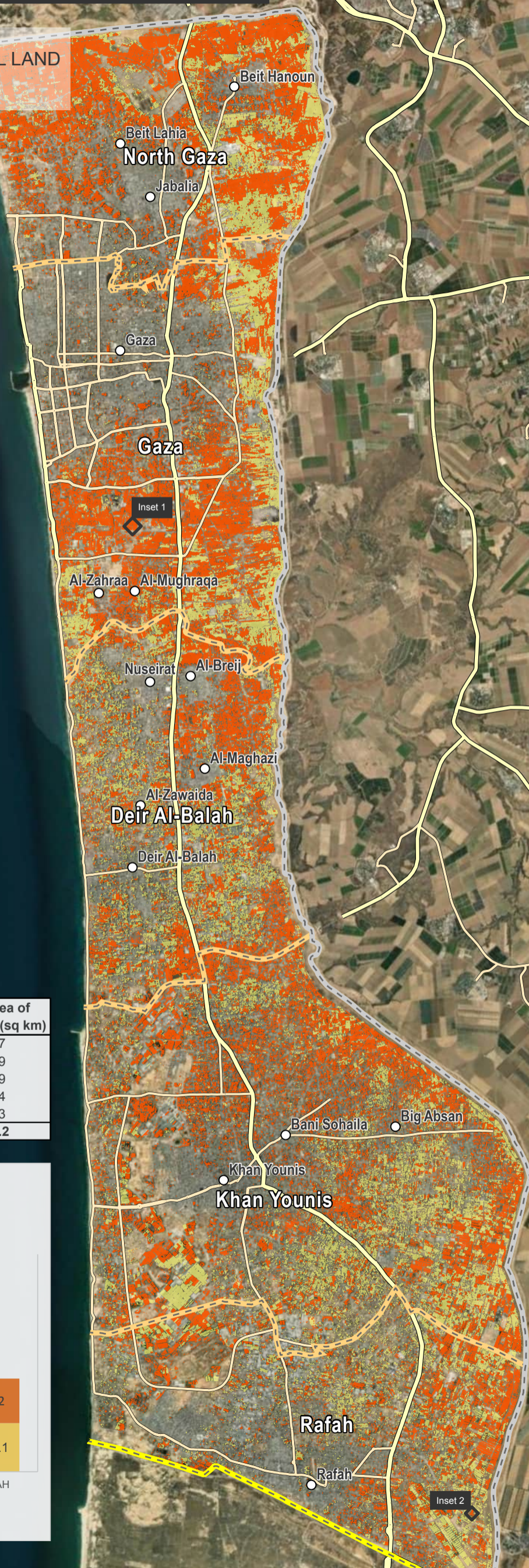
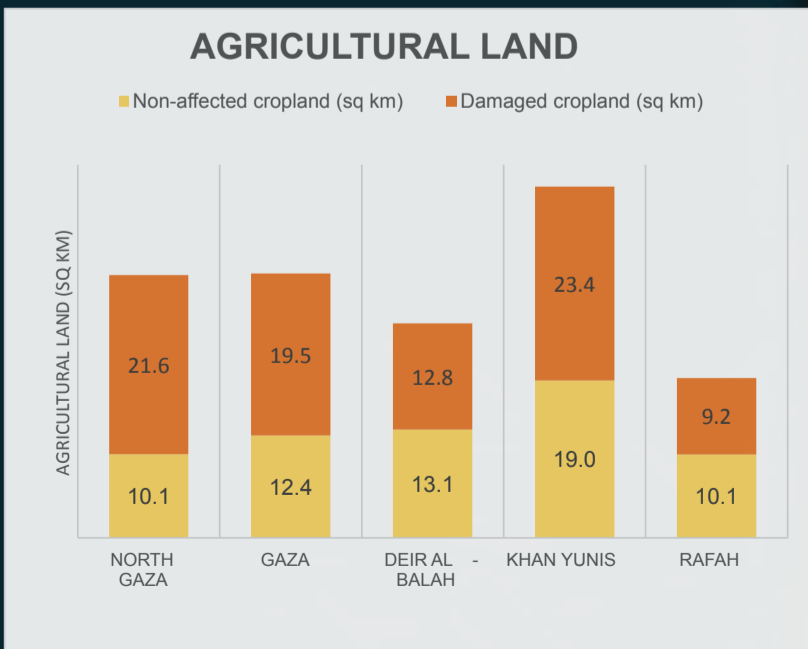

GAZA STRIP

IMAGERY ANALYSIS: 29 May 2024 / PUBLISHED: 11 June 2024 / V2


 AREA OF INTEREST
 DAMAGED AGRICULTURAL LAND
365km² **87km²**



Governorate	Non-affected cropland (sq km)		Damaged cropland (sq km)		Total area of cropland (sq km)
North Gaza	10.1	32%	21.6	68%	31.7
Gaza	12.4	39%	19.5	61%	31.9
Deir Al-Balah	13.1	51%	12.8	49%	25.9
Khan Younis	19.0	45%	23.4	55%	42.4
Rafah	10.1	52%	9.2	48%	19.3
Total	64.6		86.6		151.2

COMPLEX EMERGENCY
CE20231007PSE



UNOSAT Damage to Cropland Areas Overview Map

This map illustrates satellite-detected changes in cropland areas of the Gaza Strip resulting from the decline in the health and density of crops due to the ongoing conflict. UNOSAT-FAO conducted an analysis utilising satellite imagery collected by the Sentinel-2 satellite between May 2017 and 2024, performing a Normalized Difference Vegetation Index (NDVI) analysis as well as a multitemporal classification to identify notable changes taking place in cropland areas during that timeframe. The methodology evaluated the damage as a substantial decline in the health and density of crops in May 2024, in comparison to the preceding seven seasons spanning from 2017 to 2024. The decline in the health and density of the crops can be observed due to the impact of activities such as razing, heavy vehicle activity, bombing, shelling, and other conflict-related dynamics. The analysis includes damage assessment for orchards and other trees, field crops and vegetables. UNOSAT-FAO analysis shows that the cropland extent in the Gaza Strip is estimated to be 151 sq. km, accounting for approximately 41% of the total area of the Gaza Strip, following an extensive land-cover analysis.

Compared to the average of the previous seven years, approximately 57% of the permanent crop fields in the Gaza Strip exhibited a significant decline in health and density in May 2024. In a comprehensive evaluation, it was found that there has been a 30% increase in the proportion of cropland that has been damaged since the previous analysis conducted in April 2024. Additionally, the analysis indicates a notable rise in the destruction of the orchards and other trees, field crops and vegetables in the Gaza Governorate, with a 20-percentage point increase compared to the previous April 2024 analysis. Moreover, there has been a significant escalation in the destruction of cropland within the North Gaza Governorate, with the percentage rising from 46% in April 2024 to 68% in May 2024. This is a preliminary analysis and has not yet been validated in the field.

Legend

-  Damaged agricultural land
-  Agricultural land
-  Populated place
-  Primary road
-  Secondary road
-  Armistice Demarcation Line
-  Governorate boundary
-  International boundary

The boundaries and names shown and the designations used on this map do not imply official endorsement or acceptance by the United Nations.